

ABS GYPSUM BOARDS



Gypsum boards is
Making Life Easier

ABS products are hundred percent natural, harmless,
subsistent and eco-friendly construction materials.



■ ABS GYPSUM BOARDS

- Higher resistance and fire resistance through fiber reinforcement.
- Quick, clean and dry separation wall, production of suspended ceilings and coating possibility.
- Possibility of high flexibility with regard to planning and application.
- Convenience for mechanic and electrical installations.
- Possibility to achieve high noise and heat isolation.
- Possibility to increase the fire resistance in buildings.
- Possibility to achieve separation walls that are light and earthquake-resistant.



• Advantages



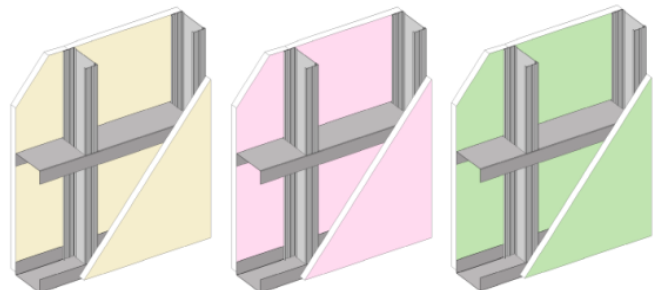
- ✓ Provide noise isolation.
- ✓ Provides heat isolation.
- ✓ Balance the ambient humidity.
- ✓ Light.
- ✓ Economical.
- ✓ Assembled easily.
- ✓ Can be painted.
- ✓ Wall paper can be covered.
- ✓ Tiles can be covered.

TS EN 520-A1

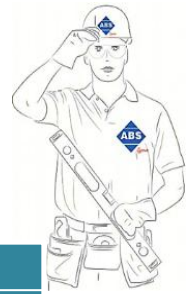
TS EN 520

• Types

1. (R) Normal Plasterboard
2. (WR) Water-Resistant Plasterboard
3. (FR) Fire-Resistant Plasterboard
4. (WR+FR) Water and Fire-Resistant Plaster boards



■ GYPSUM BOARDS APPLICATION CONDITIONS



• Sizes and weight

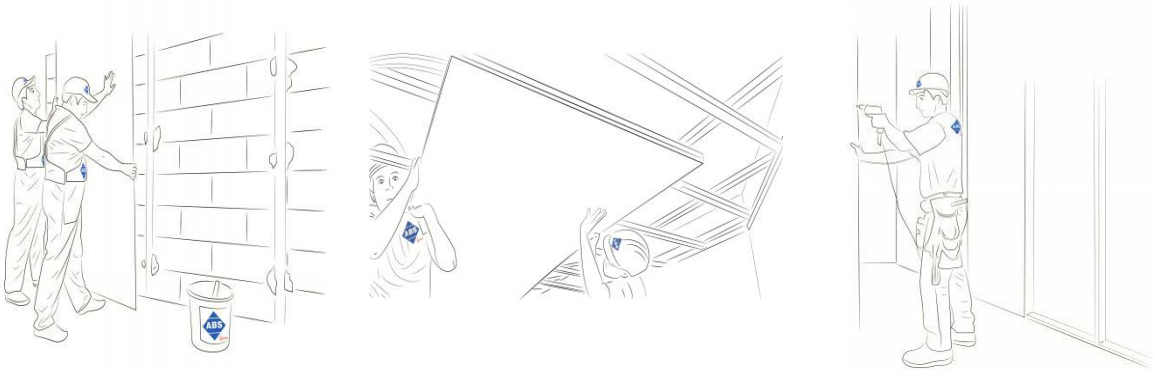
Thickness mm	Width (Min, Max) cm	Length (Min, Max) cm	Weight (kg/m ²)			
			R	WR	FR	WR+FR
7.00	120	150-450	6.00	6.50	6.50	6.60
9.50	120	150-450	7.00	7.40	7.40	7.50
12.50	120	150-450	8.70	9.00	9.00	9.50
15.00	120	150-450	10.00	10.50	10.50	10.60
18.00	120	150-450	12.00	12.50	12.50	12.60
20.00	120	150-450	14.00	14.50	14.50	14.60

• IDENTIFICATION

Plasterboard is a construction material of which the middle part is gypsum, coated with cardboard on both sides, that is produced with special dimensions and certain thicknesses, it has a smooth surface.

• APPLICATION AREAS

In internal areas of buildings As separation walls In the construction of suspended ceilings As dry plaster (it will be applied with methods such as adhesion, in construction, stapled wall enveloping).



• PACKING

The standard product will be prepared in dimensions of (120 x 2500 x 12.5 mm), in form of ringed pallets with 50 pieces. Each pallet contains 150 m² (3 m² x 50 pieces) plasterboard. The numbers in the pallets vary depending on the thickness and dimensions of the produced plasterboard.

